



The Route

West



PCYC

Entering Seaway locks (Beauharnois)

10 miles
from PCYC



**Must reserve ahead online
(St. Lawrence seaway pleasure
craft reservations)
Must pay ahead online (\$50.00)**

Fenders ready on both sides

Fenders high on wall side

Be prepared to raft up

At Beauharnois they throw you
the lines **Starboard tie**

Don't tie the lines down

Wear gloves/ have a pole to
fend off

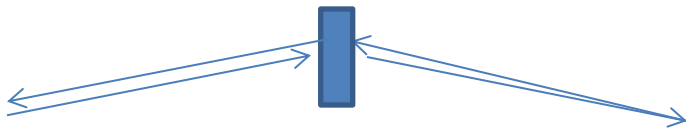
Lake St. Francis



Pleasure craft dock at Snell lock

Must tie up here and hail the lock **unless you see pleasure craft going in**





Beauharnois to Snell lock 40 miles

Snell/Eisenhower locks (Cornwall)

No reservations – hail the lock on posted channel

\$60 cash only (Canadian or US)

2 locks Port tie

Need 2 long spring lines, each from bow and stern

Wrap lines around bollard and tie back on boat

Place fenders high on gunnels

Gloves and pole to fend off

May have to wait between locks
(could be long, there is a mooring ball)

Eisenhower lock to Iroquois Lock **21 miles**



Eisenhower lock to
Chrysler marina 10 miles

Gas/water/pumpout

Entering Iroquois Lock

Last lock upbound

1 lock (25\$)

Motor slowly through/ no tie up

Reserve and Pay ahead online

Iroquois Marina (gas) on downside



Iroquois lock to Gallop canal 5 miles



Now we are on vacation!

Gallop Canal , just west of Cardinal



Brockville

Gallop Canal to Brockville 13 miles



Brockville Marina - gas

BYC – no gas

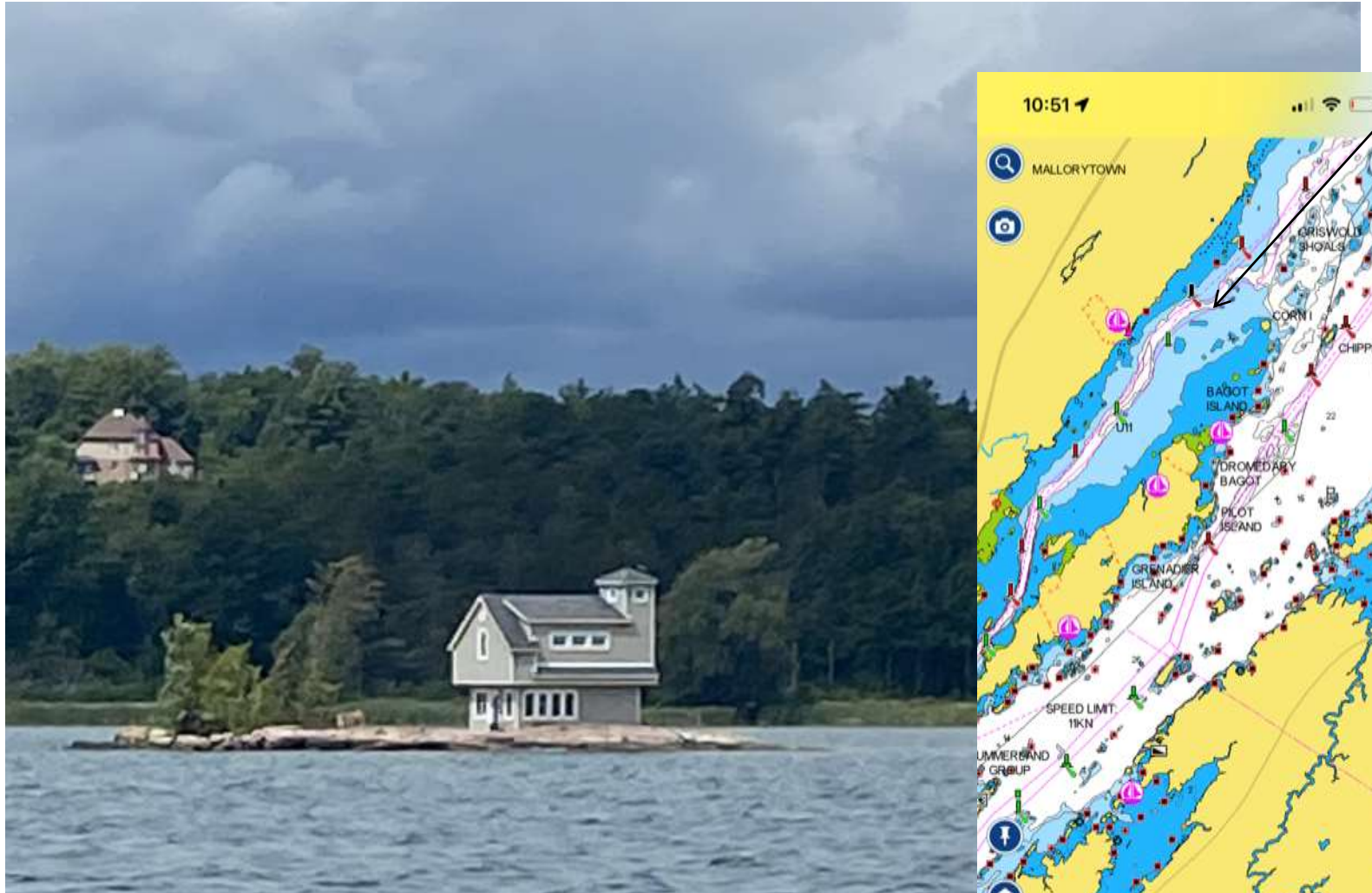
Don's Fish & Chips

Gilbert Marine – Gas

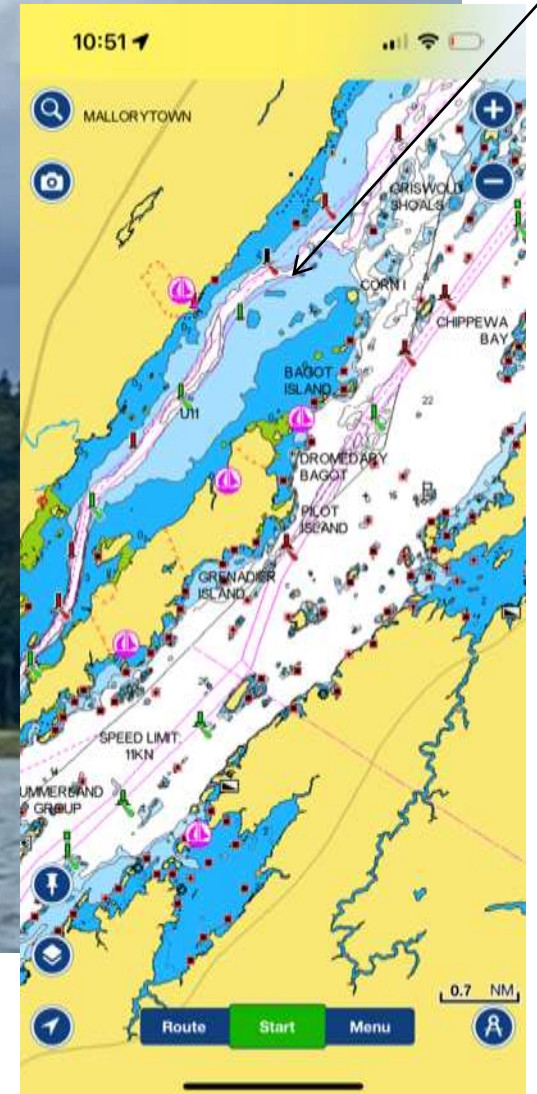
Grocery store

anchorage

Every Island counts in the **Thousand Islands!**



Bob's Island – Mallorytown

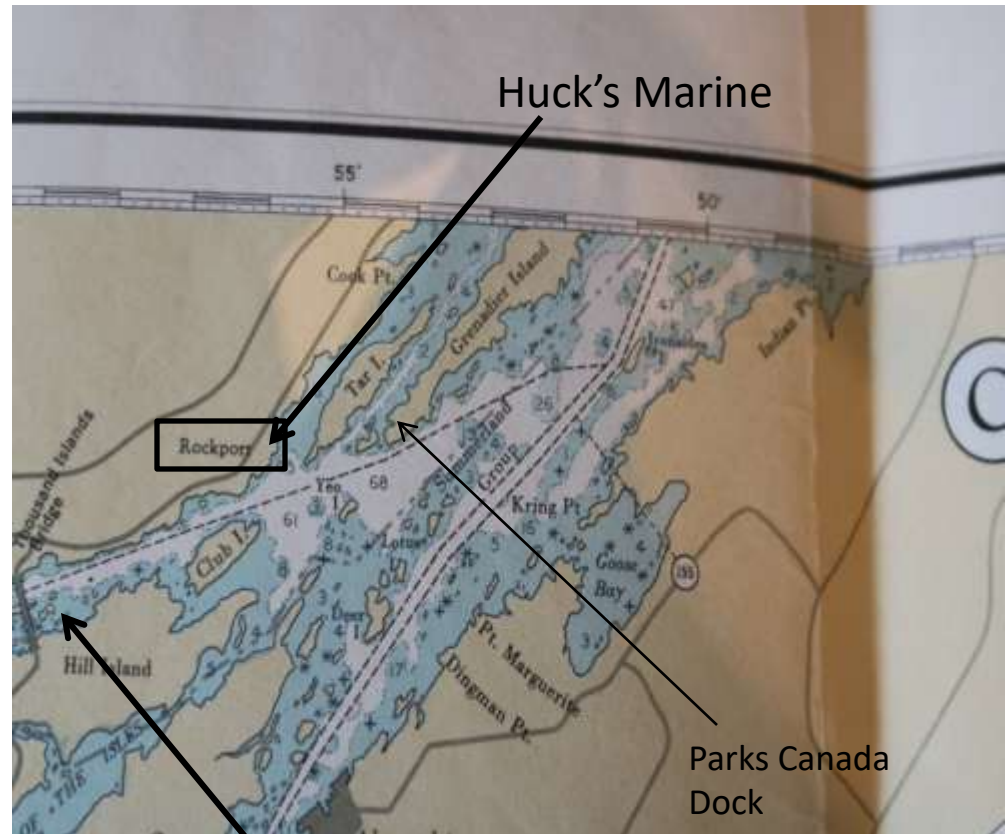


Moving up the River - Very Picturesque

Brockville to Western most
point Grenadier 15miles



Rockport
Gas, Restaurant,
Shops



Constance and Georgina Islands
Parks Canada docks
**\$1.25 /ft or \$21.50 per night on a mooring
ball**

Georgina Island – Thousand Island Bridge



Mulcaster Island

Parks Canada docks (nice long docks)



Easy dingy or kayak ride from
Mulcaster Is. to
Glen House Resort
Thousand Islands parkway



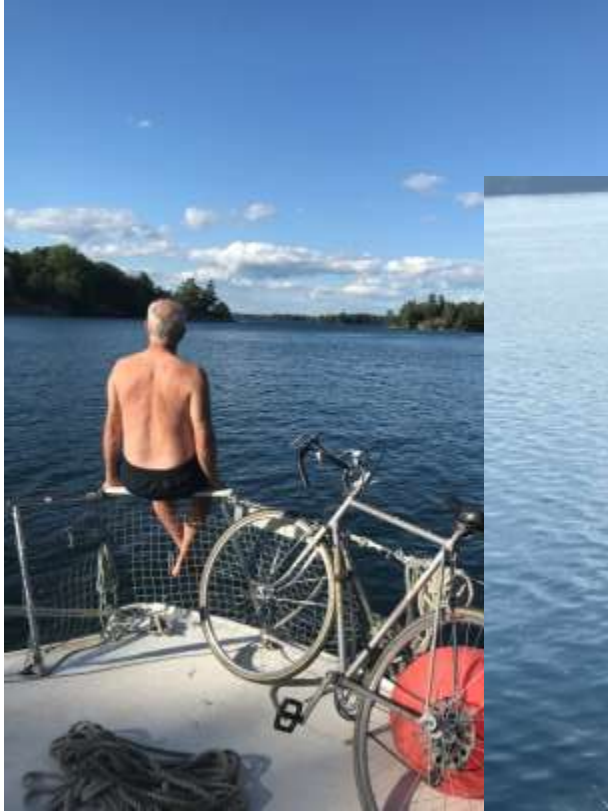
***Peck's marina- Gas (just west of Thousand
Island bridge) *no gas at Gananoque**

Tied up to Camelot Island



Camelot Island

Cliffs and Views



Leek/ Thwartway Island on a mooring ball



Sunsets wherever you go

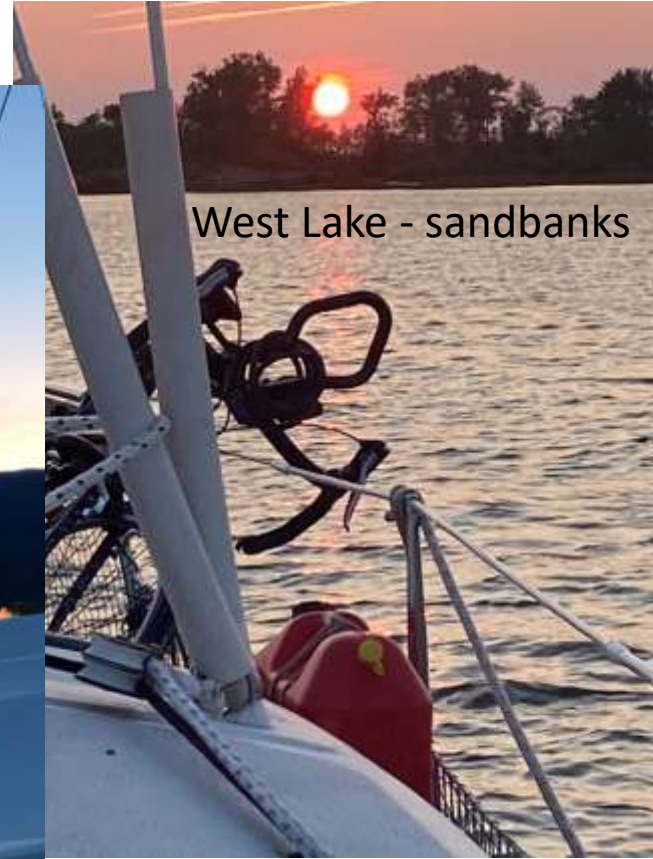
Thwartway
Island



St Lawrence
Seaway



West Lake - sandbanks



Lake Ontario



Gananoque

Grenadier Island (western tip) to Gananoque 10 miles

Great day docks


* **No gas** , water and pumpout only at Gan Marina

Enjoy the Thousand Islands Playhouse

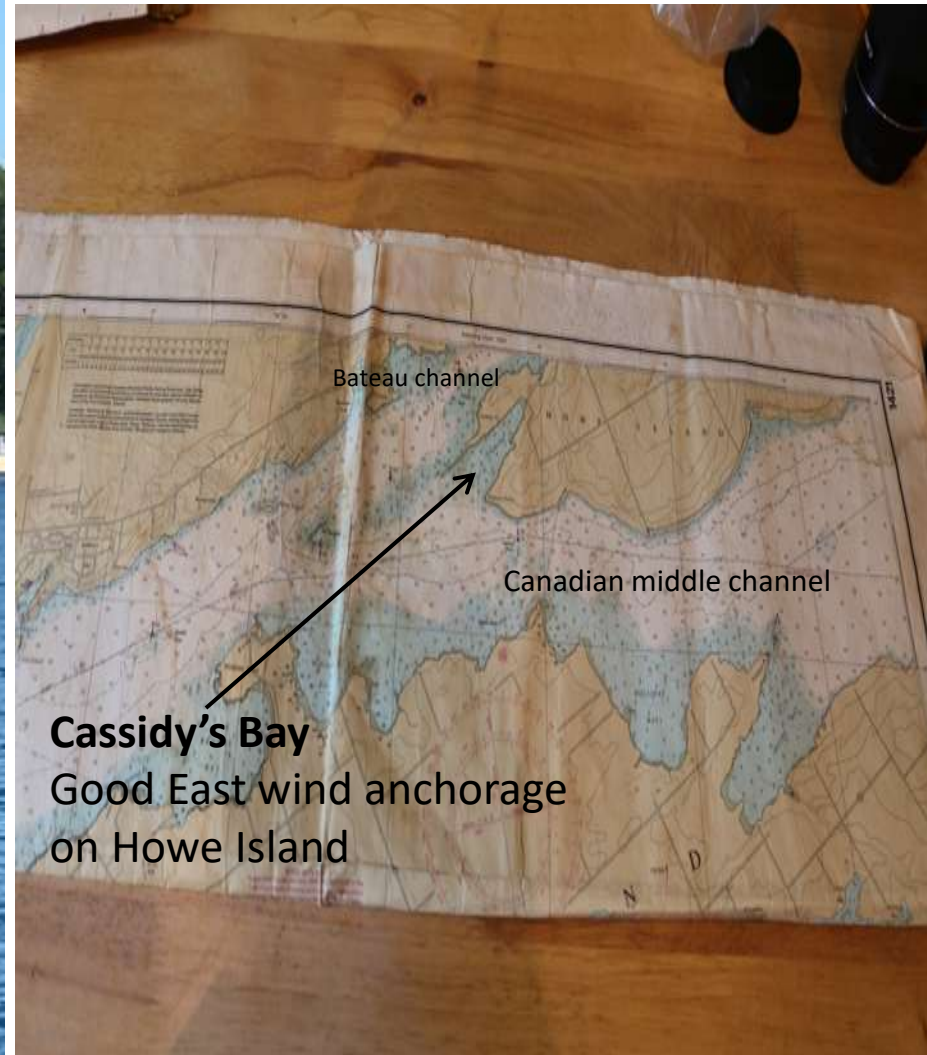


Bateau channel

More comfortable route with west wind
Trident Yacht Club
Watch for ferries (2)

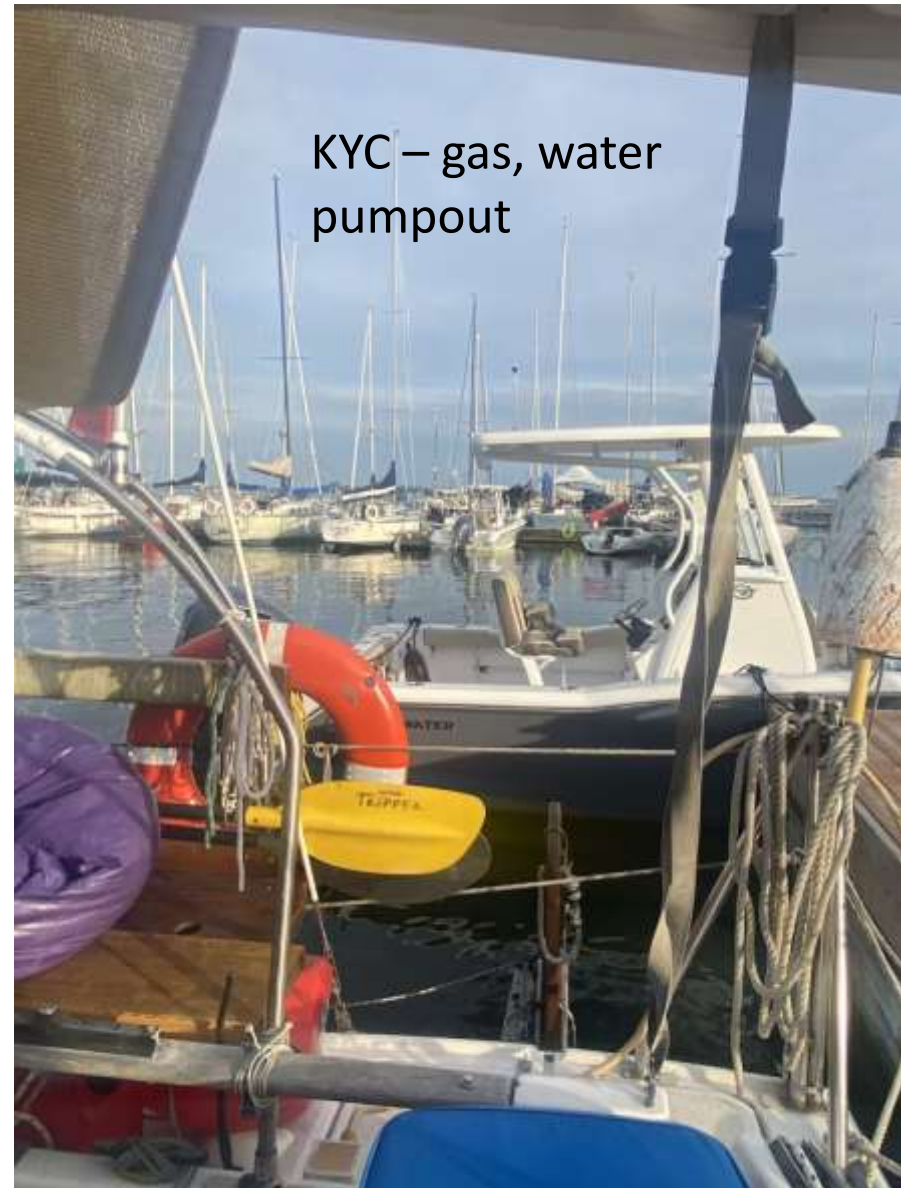


You don't only
dock your boats



Kingston!

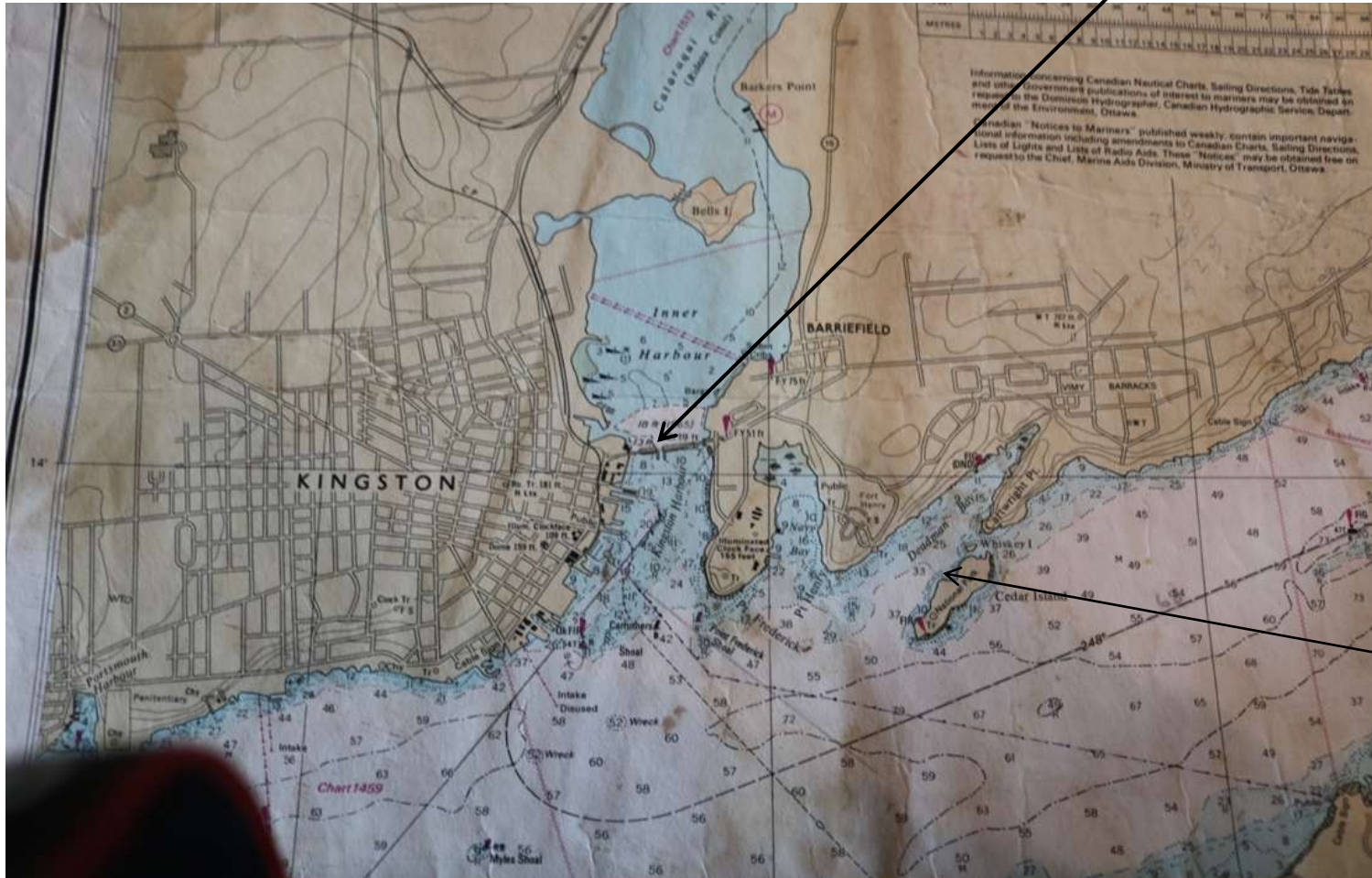
Gananocque to Kingston 14 miles



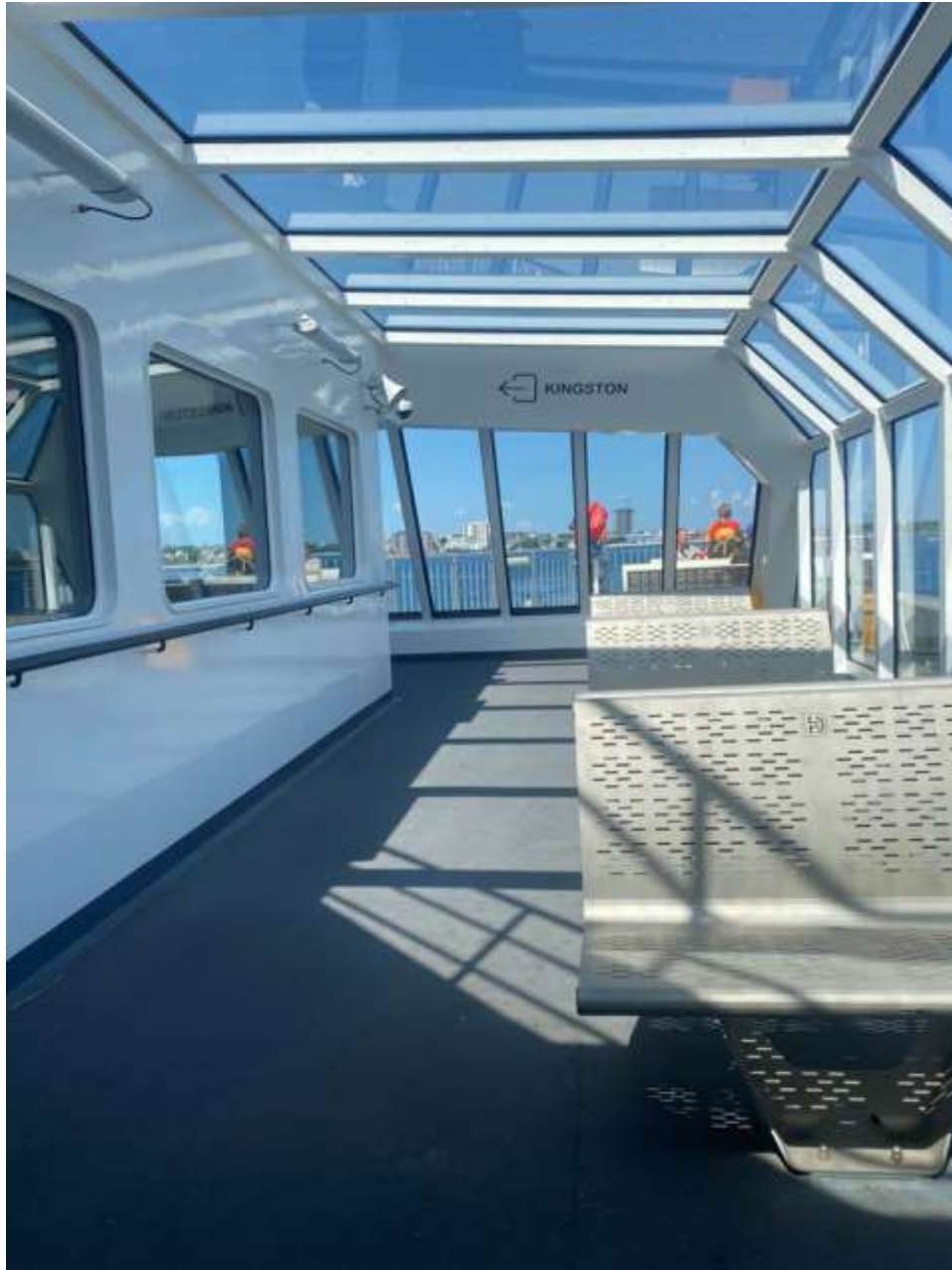
Kingston

Inner Harbour anchorage and Kingston Marina (Gas)

The LaSalle Causeway temporary modular bridge will close to vehicular, cyclist, and pedestrian traffic on a schedule yet to be determined for the 2025 navigation season.



Cedar
Island Parks
Canada
docks



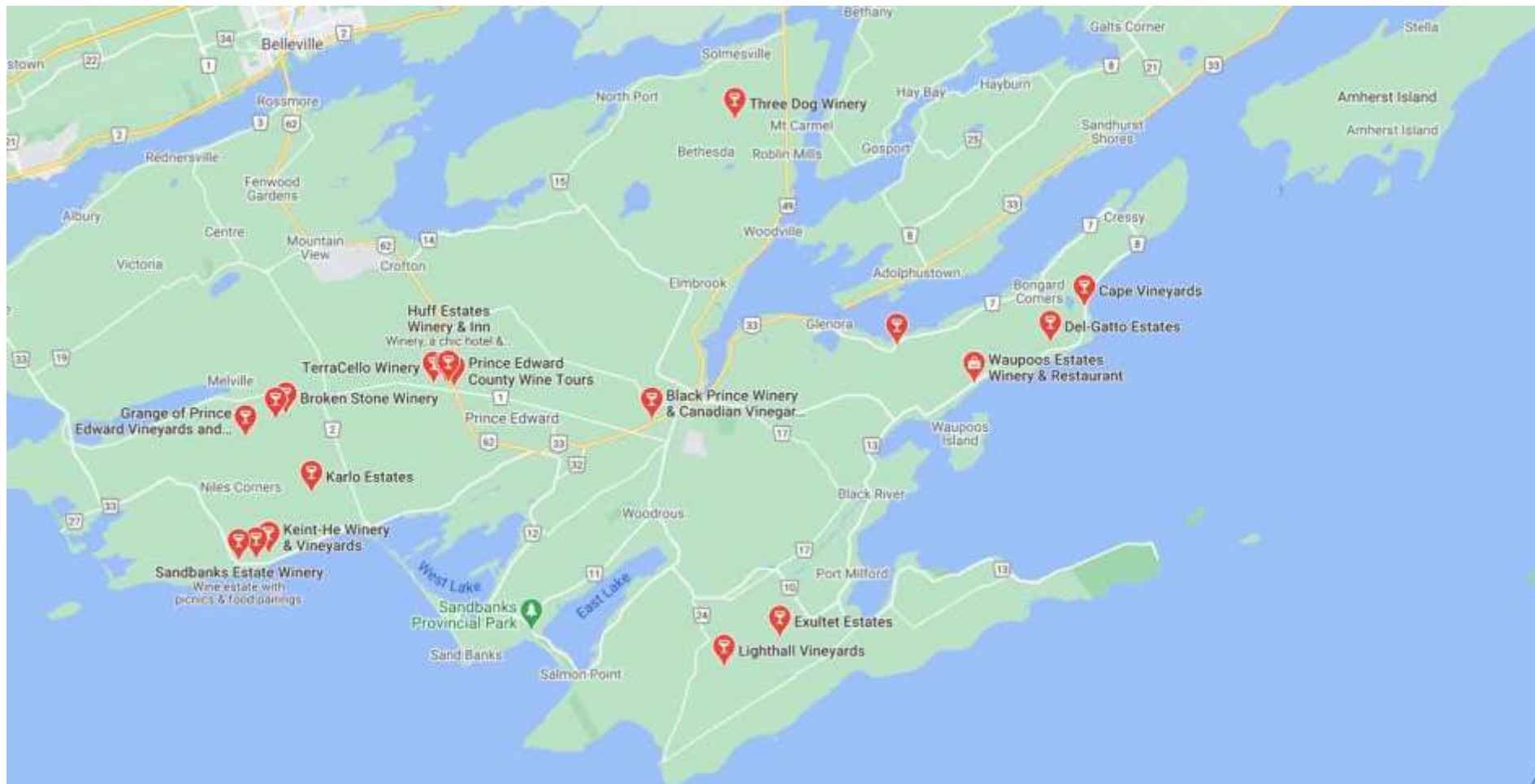
New

Free Electric
Ferry to Wolfe
Island

Great biking!

Great bar on
wolfe Island side
beside ferry dock
Best view of
Kingston
as the sun sets

Prince Edward County



Amherst Island

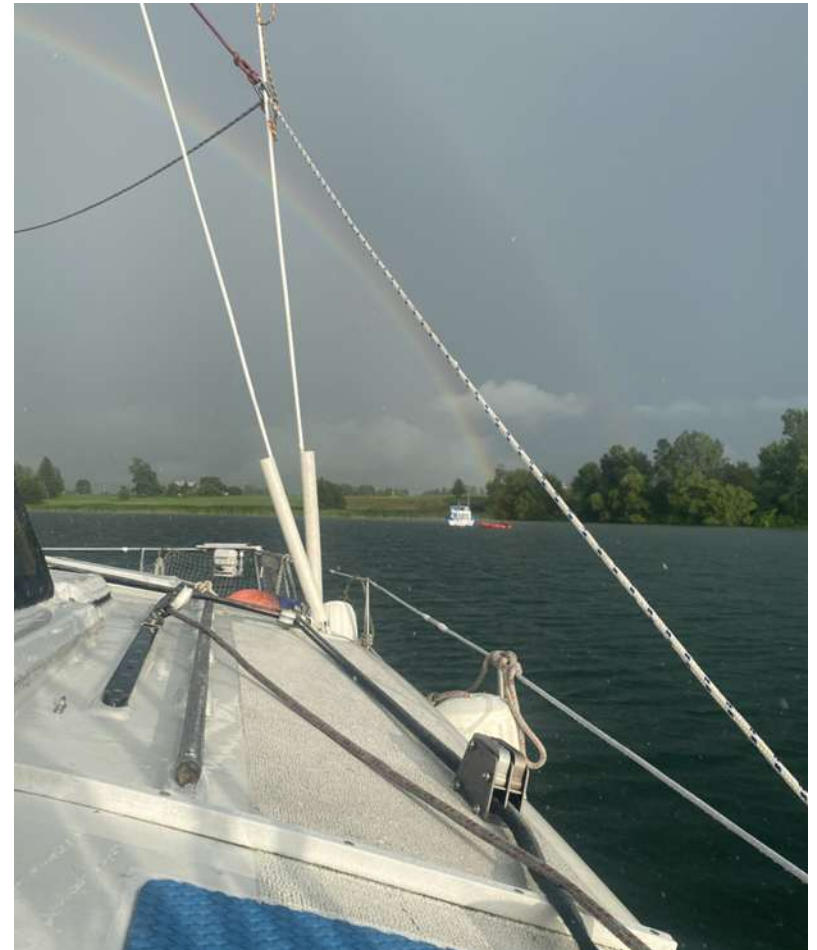


Dock for 3 hrs

Great biking and
restaurant
within walking
distance

Kingston to Stella Bay 11 mi

Kerr Bay



Biking on Amherst Island
Always a trip to the Woolshed





Parrot's Bay - across from
Amherst Island

Great for shelter from East wind



Through the Upper Gap towards
Waupoos in Lake Ontario

Waupoos Marina

Stella Bay to Waupoos Marina 15 mi



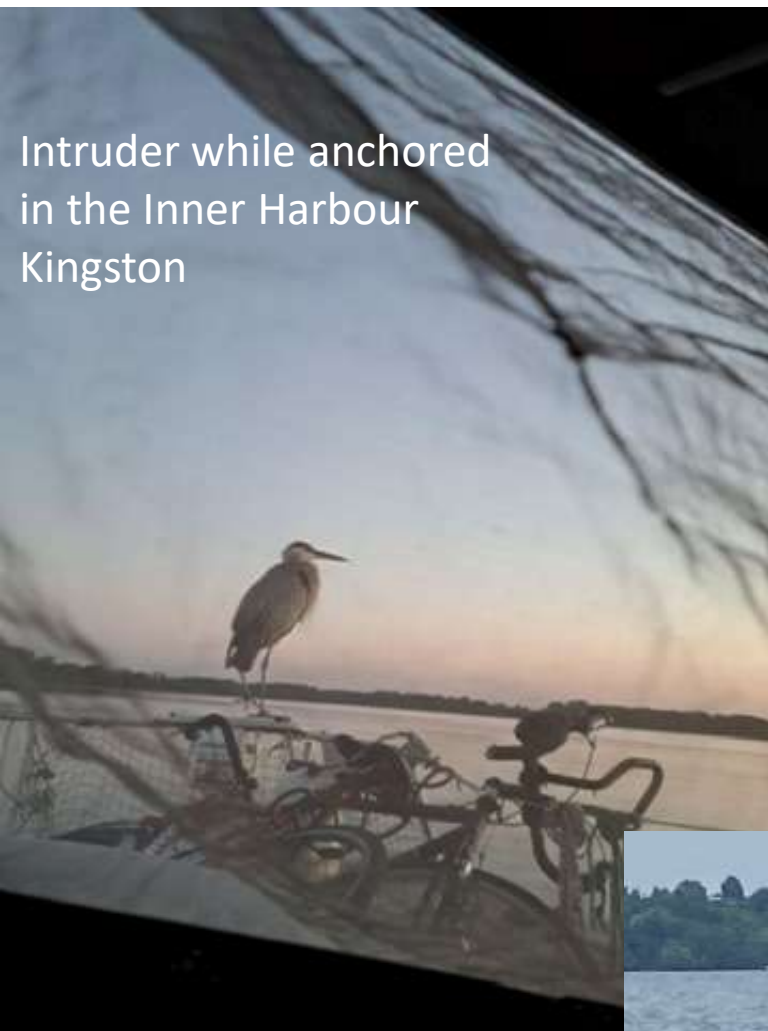
Anchored near Waupoos in
Prince Edward Bay



Heading up the Adolphus Reach

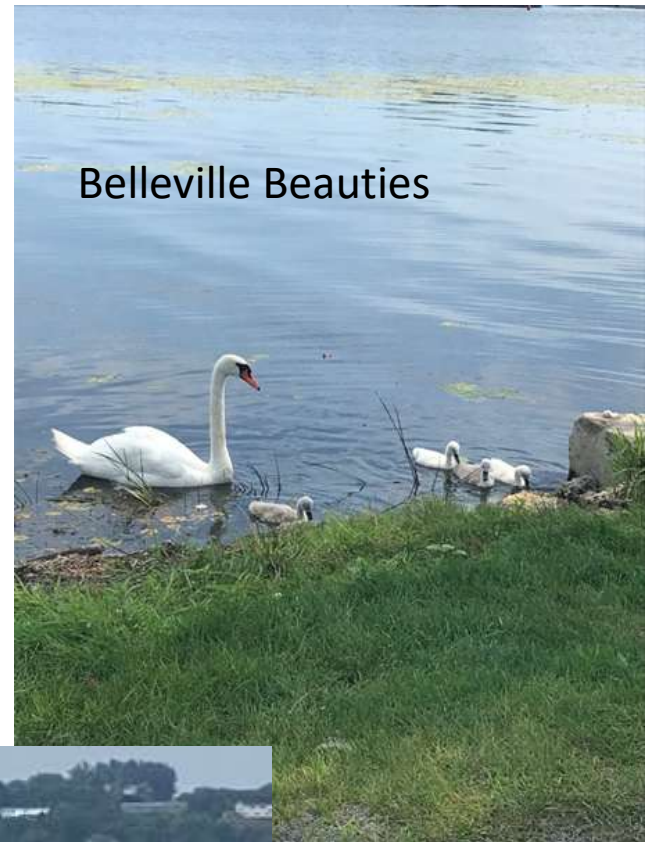
East wind!!





Intruder while anchored
in the Inner Harbour
Kingston

Birds,Birds Birds



Belleville Beauties



Loony tunes

Stella Bay to Picton Harbour 25 mi

Picton Yacht Club

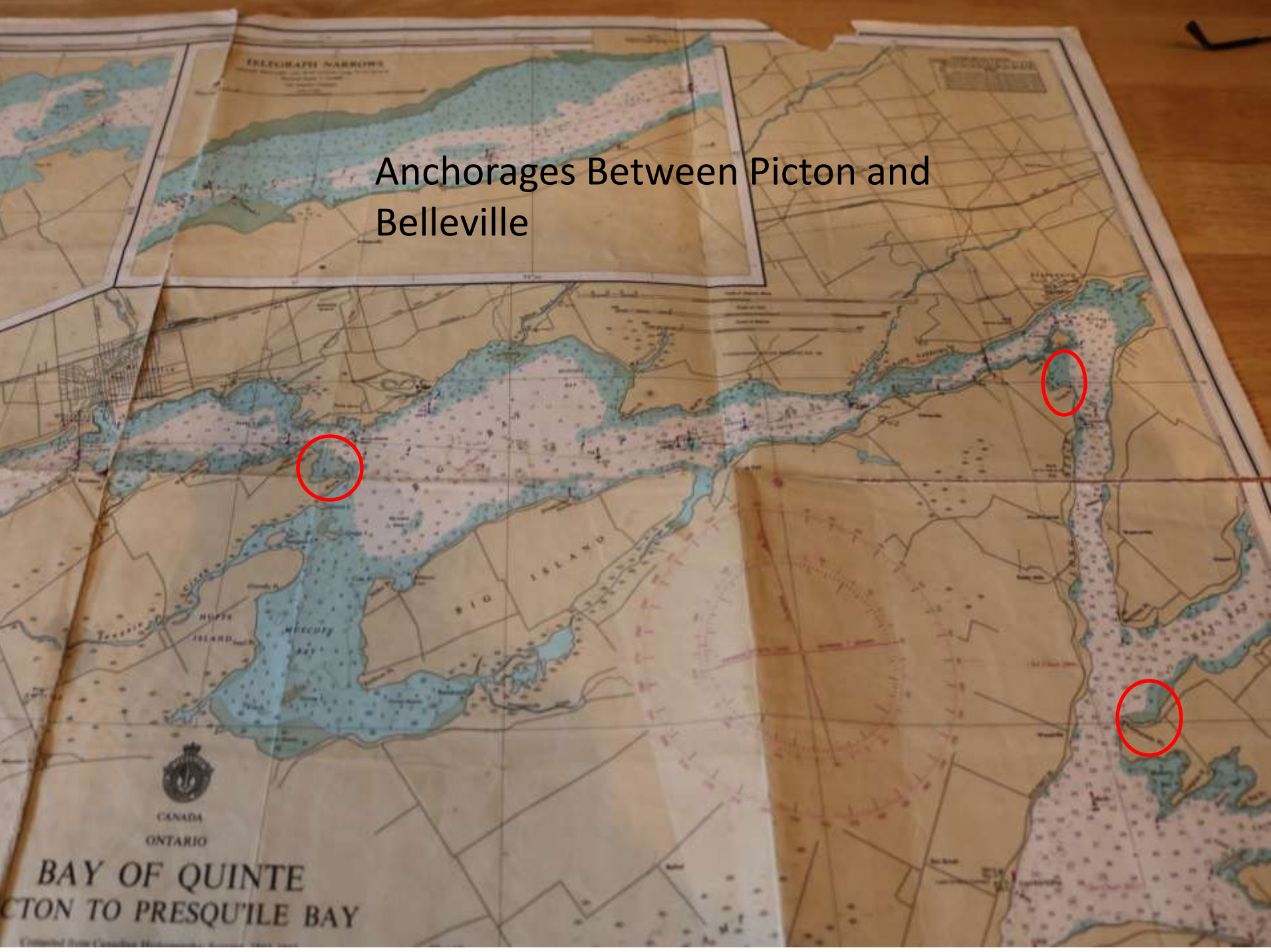
Picton Harbour

Picton Marina

Picton Marina

Shops
Restaurants
Groceries
Bookstore

Anchorage Between Picton and Belleville



2:02



Picton to Belleville 26 mi

Belleville

Myer's Pier Marina – gas water pumpout

Belleville Yacht Club – small visitors dock

The Boat House Seafood Restaurant



Murray Canal from Trenton to Presqu'île and Lake Ontario

Short canal/ 2 bridges/ cash
payment/Parks Canada hours/ wall tie up
at each end



Tied up to west wall heading to Lake
Ontario

Wellington Entrance variable depth in channel!



West Lake and Sandbanks





Wellington Harbour
town dock protected from Lake Ontario



Sandbanks Provincial Park – via Wellington harbour and West lake



Isaiah Tubbs Resort –
great place to eat and
enjoy the sunset over
the Sandbanks



Gallop Canal one
more time



Moving down the seaway
Late August / early
September gets cooler



Spending last night at Kreg
Quai after a big squall



Homeward Bound



**Starting back down
the Seaway
Iroquois lock**

